

DATA NETWORK CABLES AND ACCESSORIES SOLUTIONS



www.zttcable.com

Add: No.88 Qixin Road, NETDA, Nantong, Jiangsu, P.R. China, 226009

Tel: 86-0513-80100986 Email: sales@zttcable.com

CONNECTING WONDERFUL LIFE
WITH OPTIC-ELECTRIC NETWORK

01

COMPANY PROFILE

16000+

ZTT has more than 80 subsidiaries and 16,000 employees.

2500+

ZTT has more than 2,500 patents with independent intellectual property rights.

160

The main products are exported to 160 countries and regions.

800

In 2021, the revenue will exceed 80 billion.



ZHONGTIAN RADIO FREQUENCY CABLE CO., LTD.

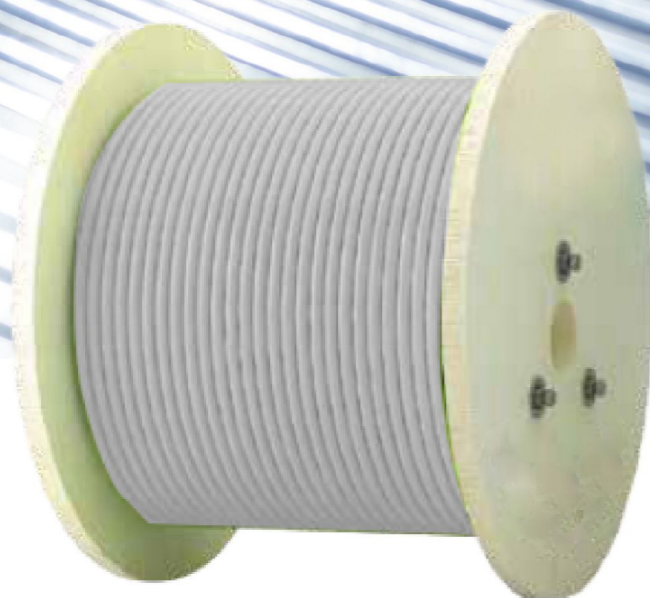
Established in 1992, ZTT started from optical fiber communications and was listed on Shanghai Stock Exchange (SSE) in 2002 (Stock Code in SSE: 600522). ZTT has pictured a diversified industrial portfolio for marine equipment, renewable energy, new materials, smart grid, optical communications and other diversified industrial products. ZTT Group is now hosting 80 subsidiary companies and over 16,000 employees, operating 5 overseas plants located in India, Brazil, Indonesia, Morocco and Turkey. ZTT owns more than 2500 patents with independent intellectual property rights, presided over or participated in more than 500 international and national industry standards. The products of ZTT are exported to 160 countries and regions. The company has ranked among the top 500 Chinese enterprises for consecutive years and broke through \$ 12.5 billion in sales revenue in 2021. ZTT follows the new economic model of fostering cleaner production and accelerating green and low-carbon development, works hard to serve as the pioneer of persistent endeavor to achieve national goal involving carbon dioxide emissions peaking by 2030 and carbon neutrality by 2060, emerging as a green manufacturing technology group assuming regional economy.

Zhongtian RF Cable Co., Ltd as a subsidiary of ZTT was established in 2004. It has domestic leading production sites and equipment, converges many senior experts in the industry, and has a strong technical development team.

Our company focuses on providing one-stop data cable solutions. The main products include: CAT5e, CAT6, CAT6A, CAT7, CAT8 full series of data network cable products and various modules, patch panels, panels, jumpers, cabinets, etc. Coaxial cables, high temperature coaxial cables, leaky coaxial cables, railway signal cables, railway digital signal cables, and RF coaxial connectors are all developed, produced and sold.

02

NETWORK LINE SYSTEM



>> SYSTEM OVERVIEW

ZTT network cable system includes network cable, copper jumper, module/smart module/POE power supply module, patch panel/smart patch panel, cable manager, high-end shielded/unshielded pressure-free crystal head, network tool kit, etc.

ZTT wire: The wire is straight, the material is environmentally friendly, the outer quilt is high-quality, and the test margin is high.

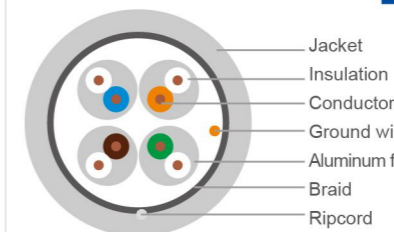
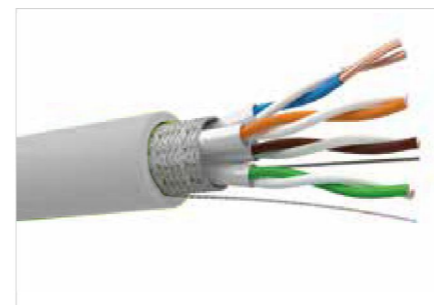
ZTT jumper: high-purity oxygen-free copper, cold-resistant 50U crystal head, high test margin. The jumper color ring is added, which is easy to distinguish and manage, save costs, and is convenient and fast.

ZTT network accessories: module gold-plated 50U gold pins, many times of plugging and unplugging, and high test margin. The patch panel/cable organizer has special painting process, dirt resistance, corrosion resistance, user-friendly design, easy to use, sturdy structure, and good load-bearing performance. The web kit is easy to use, high quality and durable. Intelligent modules and electronic distribution frames monitor end-to-end network connections in real time.

01

CAT 8 SERIES

>> S/FTP CAT8 CABLE



● Up to standard/ ISO/IEC 11801 ANSI/TIA-568.2-D

● Product features/

- Conductor wire gauge: 22AWG
- Conductor material: high-purity oxygen-free copper (purity 99.9%)
- Insulation layer material: HDPE+foamed PE+HDPE
- Pair of shielding material: aluminum foil + braid
- Outer Sheath Material: PVC, LSZH, TPU
- Operating temperature: -20~+75°
- Packing: 305m/axis, 500m/axis
- Maximum pulling force (installation): 110N
- Minimum bending radius (installation): 8 times the outer diameter of the cable

>> CAT8 S/FTP KEYSTONE JACK(KJ)



● Up to standard/ ISO/IEC 11801 ANSI/TIA-568.2-D

● Product features/

- S/FTP CAT8 hit-free Module 180 °C
- Gold Pin: environmentally friendly phosphor bronze, gold-plated 50U
- Plug life: ≥750 times
- Terminal Sequence: T568A/T568B
- Snap conductor wire gauge: 22AWG-26AWG
- Unique alloy cladding, integral shielding, solid rear shielding cover
- Tool-free connection, easy to install
- Compact structure (small size, can be installed side by side to achieve high-density applications)
- Easy termination, universal compatibility

>> S/FTP CAT 8 PATCH CORD



● Up to standard/ ISO/IEC 11801 ANSI/TIA-568.2-D

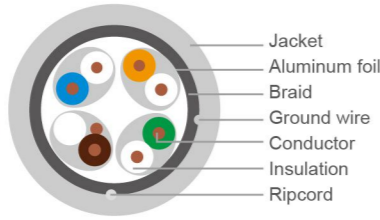
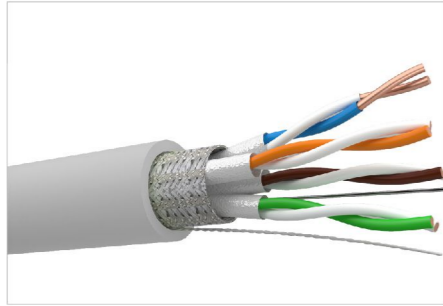
● Product features/

- Conductor wire gauge: 28AWG/ 26AWG/ 24AWG (optional) port
- Conductor material: high-purity oxygen-free copper (purity 99.9%)
- Insulation layer material: HDPE + foamed PE +HDPEO
- Shielding material: aluminum foil + braid
- Outer Sheath Material: PVC, LSZH, TPU
- Rated temperature: -20°C~+75°
- Maximum pulling force (installation): 110N
- Minimum bending radius (installation): 8 times the outer diameter of the cable
- Shielded crystal head crimping reed is 50U gold-plated as a whole to ensure excellent performance

02

S/FTP CAT6A SERIES

>> S/FTP CAT6A CABLE



● Up to standard/

ISO/IEC 11801 | ANSI/TIA-568.2-D | YD/T1019-2013

● Product features/

- Conductor wire gauge: 23AWG
- Conductor material: high-purity oxygen-free copper (purity 99.9%)
- Insulation layer material: HDPE + foamed PE +HDPE
- Pair of shielding material: aluminum foil + braid
- Outer Sheath Material: PVC, LSZH, TPU
- Operating temperature: -20~75°C
- Packing: 305m/axis, 500m/axis
- Maximum pulling force (installation): 110N
- Minimum bending radius (installation): 8 times the outer diameter of the cable

>> CAT6A S/FTP KEYSTONE JACK(KJ)



● Up to standard/

ISO/IEC 11801 | ANSI/TIA-568.2-D

● Product features/

- S/FTP CAT6A Cable Module 180 °C
- Gold Pin: Environmentally friendly phosphor bronze, gold-plated 50U
- Plug life: ≥750 times
- Terminal Sequence: T568A/T568B
- Snap conductor wire gauge: 22AWG-26AWG
- Unique zinc alloy cladding, integral shielding, solid rear shield cover
- Tool-less connection for easy installation
- Compact structure (small size, can be installed side by side. To achieve high-density applications)
- Easy termination, universal compatibility.

>> S/FTP CAT6A PATCH CORD



Ordinary plastic injection

● Up to standard/

ISO/IEC 11801 | ANSI/TIA-568.2-D | YD/T926.3-2009

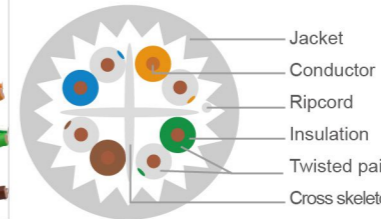
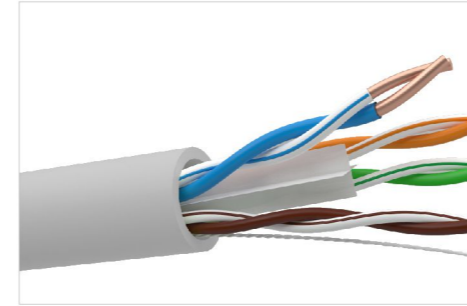
● Product features/

- Conductor wire gauge: 26AWG
- Conductor material: high-purity oxygen-free copper (purity 99.9%)
- Insulation layer material: HDPE + foamed PE + HDPE
- Shielding material: aluminum foil + braid
- Outer Sheath Material: PVC, LSZH, TPU
- Rated temperature: -20°C~+75°C
- Maximum pulling force (installation): 110N
- Minimum bending radius (installation): 8 times the outer diameter of the cable
- Shielded crystal head crimping reed is 50U gold-plated as a whole to ensure excellent performance
- The crystal head glue injection is divided into ordinary type and color ring type, and the color ring type is easy to distinguish and manage the wires of the same color.

03

U/UTP CAT6A SERIES

>> U/UTP CAT6A CABLE



● Up to standard/

ISO/IEC 11801 | ANSI/TIA-568.2-D | YD/T1019-2013

● Product features/

- Conductor wire gauge: 23AWG
- Conductor material: high-purity oxygen-free copper (purity 99.9%)
- Insulation layer material: HDPE filled
- Filling material: PE
- Outer Sheath Material: PVC, LSZH, TPU
- Operating temperature: -20~75°C
- Packing: 305m/carton, 305m/axis, 500m/axis
- Maximum pulling force (installation): 110N
- Minimum bending radius (installation): 4 times the outer diameter of the cable

>> U/UTP CAT6A KEYSTONE JACK(KJ)

● Up to standard/

ISO/IEC 11801 | ANSI/TIA-568.2-D

Wire bonding Module 90 °C



- Gold Pin: Environmentally friendly phosphor bronze, gold-plated 50U
- Plug life: ≥750 times
- It supports the common 110 termination method to ensure the reliability of the connection.
- Terminal Sequence: T568A/T568B
- Terminates 4-pair 22AWG-26AWG cable
- High strength fireproof plastic

Intelligent Module



- Gold Pin: environmentally friendly phosphor bronze, gold-plated 50U
- Plug life: ≥750 times
- Terminal sequence: T568A/T568B branch
- It supports the common 110 termination method to ensure the reliability of the connection.
- Terminates 4-pair 22AWG-26AWG cable
- High strength fireproof plastic
- With intelligent LED lights, it is convenient to find lines and manage the wiring in the equipment room

POE power supply module



- Gold Pin: environmentally friendly phosphor bronze, gold-plated 50U
- Plug life: ≥750 times
- Terminal Sequence: T568A/T568B
- Terminates 4-pair 22AWG-26AWG cable
- It is easy to divide the construction line and improve the construction efficiency
- Small size, convenient for high-density environment installation
- Push-up snap-on cable clip cover for easy access
- Patented connection terminal and piercing terminal, passed POE++ test

>> U/UTP CAT6A PATCH CORD

● Up to standard/

ISO/IEC 11801 | ANSI/TIA-568.2-D | YD/T926.3-2009

Conductor wire gauge: 24AWG



Ordinary plastic injection

● Product features/

- Conductor material: high-purity oxygen-free copper (purity 99.9%)
- Insulation layer material: HDPE
- Outer sheath material: PVC, LSZH, TPU
- Rated temperature: -20°C~+75°C
- Maximum pulling force (installation): 110N
- Minimum bending radius (installation): 4 times the outer diameter of the cable
- The crystal head crimping reed is 50U gold-plated as a whole to ensure excellent performance
- The crystal head glue injection is divided into ordinary type and color ring type, and the color ring type is easy to distinguish and manage the wires of the same color.

>> U/UTP CAT6A ULTRA-THIN PATCH CORD

Conductor wire gauge: 28AWG

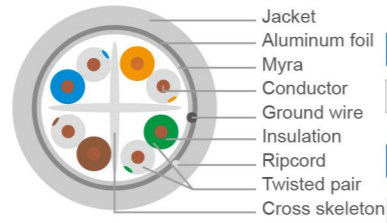
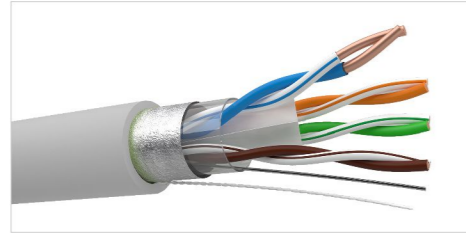


Small wire diameter, save space, can be used in narrower places with stable performance

04

F/UTP CAT6 SERIES

>> SF/UTP CAT6 CABLE



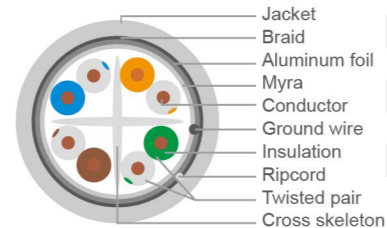
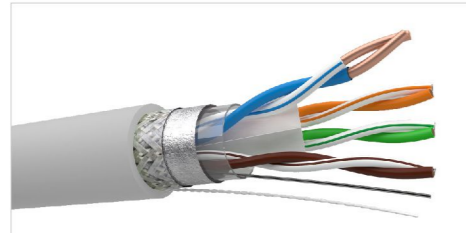
● Up to standard/

ISO/IEC 11801 ANSI/TIA-568.2-D YD/T1019-2013

● Product features/

- Conductor wire gauge: 23AWG
- Conductor material: high-purity oxygen-free copper (purity 99.9%)
- Insulation layer material: HDPE
- Filling material: PE
- Outer Sheath Material: PVC, LSZH, TPU
- Operating temperature: -20~75°C
- Packing: 305m/axis, 500m/axis
- Maximum pulling force (installation): 110N
- Minimum bending radius (installation): 8 times the outer diameter of the cable

>> F/UTP CAT6



- Minimum bending radius (installation): 8 times the outer diameter of the cable

>> F/UTP CAT6 KEYSTONE JACK(KJ)



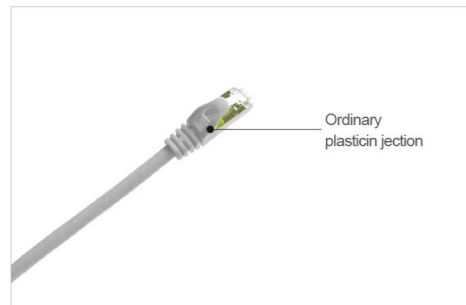
● Up to standard/

ISO/IEC 11801 ANSI/TIA-568.2-D

● Product features/

- 180-degree hit-free shielding module
- Gold Pin: Environmentally friendly phosphor bronze, gold-plated 50U
- Plug life: ≥750 times
- Terminal Sequence: T568A/T568B
- Snap conductor wire gauge: 22AWG-26AWG
- Unique zinc alloy cladding, integral shielding, solid rear shield cover
- Tool-less connection for easy installation
- Compact structure (small size, can be installed side by side. To achieve high-density applications)
- Easy termination, universal compatibility.

>> F/UTP CAT6 PATCH CORD



● Up to standard/

ISO/IEC 11801 ANSI/TIA-568.2-D YD/T926.3-2009

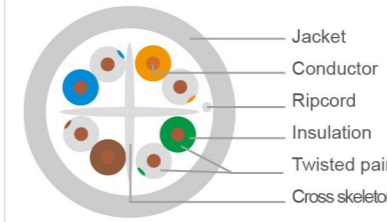
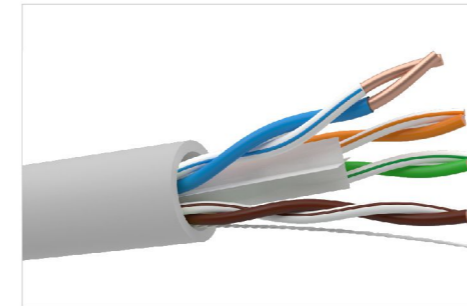
● Product features/

- Conductor wire gauge: 26AWG
- Conductor material: high-purity oxygen-free copper (purity 99.9%)
- Insulation layer material: HDPE
- Shielding material: aluminum foil + braid
- Outer Sheath Material: PVC, LSZH, TPU
- Rated temperature: -20°C~+75°C
- Maximum pulling force (installation): 110N
- Minimum bending radius (installation): 8 times the outer diameter of the cable
- Shielded crystal head crimping reed is 50U gold-plated as a whole to ensure excellent performance
- The crystal head glue injection is divided into ordinary type and color ring type, and the color ring type is easy to distinguish and manage the wires of the same color.

05

U/UTP SERIES

>> U/UTP CAT6 CABLE



● Up to standard/

ISO/IEC 11801 ANSI/TIA-568.2-D YD/T1019-2013

● Product features/

- Conductor wire gauge: 23AWG
- Conductor material: high-purity oxygen-free copper (purity 99.9%)
- Insulation layer material: HDPE
- Filling material: PE
- Outer Sheath Material: PVC, LSZH, TPU
- Operating temperature: -20~75°C
- Packing: 305m/carton
- Maximum pulling force (installation): 110N
- Minimum bending radius (installation): 8 times the outer diameter of the cable

>> U/UTP CAT 6 KEYSTONE JACK(KJ)

● Up to standard/

ISO/IEC 11801 ANSI/TIA-568.2-D

Wire bonding Module 90°C



- Gold Pin: Environmentally friendly phosphor bronze, gold-plated 50U
- Plug life: ≥750 times
- It supports the common 110 termination method to ensure the reliability of the connection.
- Terminal Sequence: T568A/T568B
- Terminates 4-pair 22AWG-26AWG cable
- High strength fireproof plastic

Intelligent Module



- Gold Pin: environmentally friendly phosphor bronze, gold-plated 50U
- Plug life: ≥750 times
- Terminal sequence: T568A/T568B branch
- It supports the common 110 termination method to ensure the reliability of the connection.
- Terminates 4-pair 22AWG-26AWG cable
- High strength fireproof plastic
- With intelligent LED lights, it is convenient to find lines and manage the wiring in the equipment room

POE power supply module



- Gold Pin: environmentally friendly phosphor bronze, gold-plated 50U
- Plug life: ≥750 times
- Terminal Sequence: T568A/ T568B
- Terminates 4-pair 22AWG-26AWG cable
- It is easy to divide the construction line and improve the construction efficiency
- Small size, convenient for high-density environment installation
- Push-up snap-on cable clip cover for easy access
- Patented connection terminal and piercing terminal, passed POE++ test

>> U/UTP CAT6 ULTRA-FINE PATCH CORD

Conductor wire gauge:24AWG



● Up to standard/

ISO/IEC 11801 ANSI/TIA-568.2-D YD/T926.3-2009

● Product features/

- Conductor material: high-purity oxygen-free copper (purity 99.9%)
- Insulation layer material: HDPE
- Outer sheath material: PVC, LSZH, TPU
- Rated temperature: -20°C~+75°C
- Maximum pulling force (installation): 110N
- Minimum bending radius (installation): 4 times the outer diameter of the cable
- The crystal head crimping reed is 50U gold-plated as a whole to ensure excellent performance
- The crystal head glue injection is divided into ordinary type and color ring type, and the color ring type is easy to distinguish and manage the wires of the same color.

>> U/UTP CAT6 PATCH CORD

Conductor wire gauge:28AWG

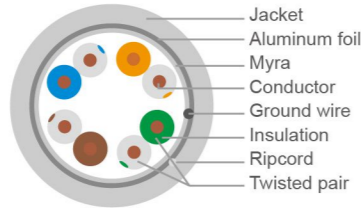
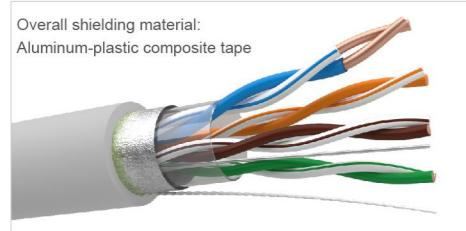


Small wire diameter, save space, can be used in narrower places with stable performance

06

F/UTP CAT5E SERIES

>> SF/UTP CAT5E CABLE



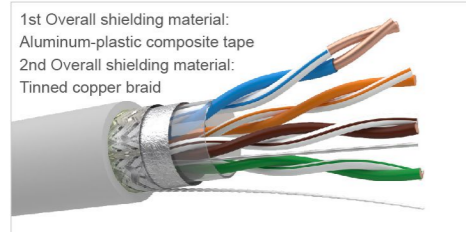
● Up to standard/

ISO/IEC 11801 ANSI/TIA-568.2-D YD/T1019-2013

● Product features/

- Conductor material: high-purity oxygen-free copper (purity 99.9%)
- Insulation layer material: HDPE
- Filling material: PE
- Outer Sheath Material: PVC, LSZH, TPU
- Operating temperature: -20~75°C
- Packing: 305m/axis- 500m/axis
- Maximum pulling force (installation): 110N
- Minimum bending radius (installation): 8 times the outer diameter of the cable

>> F/UTP CAT5E CABLE



● Up to standard/

ISO/IEC 11801 ANSI/TIA-568.2-D YD/T1019-2013

● Product features/

- Conductor material: high-purity oxygen-free copper (purity 99.9%)
- Insulation layer material: HDPE
- Filling material: PE
- Outer Sheath Material: PVC, LSZH, TPU
- Operating temperature: -20~75°C
- Packing: 305m/axis- 500m/axis
- Maximum pulling force (installation): 110N
- Minimum bending radius (installation): 8 times the outer diameter of the cable

>> F/UTP CAT5E KEYSTONE JACK(KJ)



● Up to standard/

ISO/IEC 11801 ANSI/TIA-568.2-D

● Product features/

- 180-degree hit-free shielding module
- Gold Pin: Environmentally friendly phosphor bronze, gold-plated 50U
- Plug life :≥750 times
- Terminal Sequence: T568A/T568B
- Snap conductor wire gauge: 22AWG-26AWG
- Unique zinc alloy cladding, integral shielding, solid rear shield cover
- Tool-less connection for easy installation
- Compact structure (small size, can be installed side by side. To achieve high-density applications)
- Easy termination, universal compatibility.

>> F/UTP CAT5E PATCH CORD



● Up to standard/

ISO/IEC 11801 ANSI/TIA-568.2-D YD/T926.3-2009

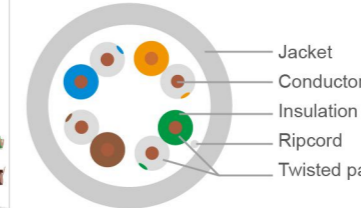
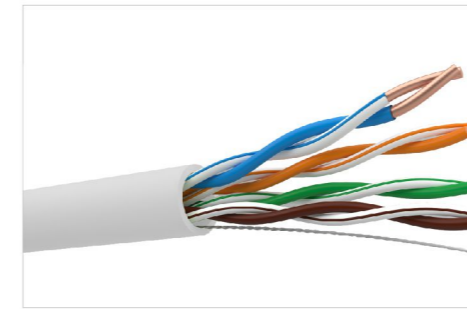
● Product features/

- Conductor wire gauge:26AWG
- Conductor material: high-purity oxygen-free copper (purity 99.9%)
- Insulation layer material: HDPE
- Outer sheath material: PVC, LSZH, TPU
- Rated temperature: -20°C~+75°C
- Maximum pulling force (installation): 110N
- Minimum bending radius (installation): 8 times the outer diameter of the cable
- The crystal head crimping reed is 50U gold-plated as a whole to ensure excellent performance
- The crystal head glue injection is divided into ordinary type and color ring type, and the color ring type is easy to distinguish and manage the wires of the same color.

07

U/UTP CAT5E SERIES

>> U/UTP CAT5E CABLE



● Up to standard/

ISO/IEC 11801 ANSI/TIA-568.2-D YD/T1019-2013

● Product features/

- Conductor wire gauge: 24AWG
- Conductor material: high-purity oxygen-free copper (purity 99.9%)
- Insulation layer material: HDPE
- Outer Sheath Material: PVC, LSZH, TPU
- Operating temperature: -20~75°C
- Packing: 305m/axis (Outdoor) - 305m/carton (CAT5E)
- Maximum pulling force (installation): 110N
- Minimum bending radius (installation): 4 times the outer diameter of the cable

>> U/UTP CAT5E KEYSTONE JACK (KJ)

● Up to standard/

ISO/IEC 11801 ANSI/TIA-568.2-D



- Gold Pin: Environmentally friendly phosphor bronze, gold-plated 50U
- Plug life: ≥750 times
- Terminal Sequence: T568A/T568B
- High strength fireproof plastic
- Snap conductor wire gauge: 22AWG-26AWG
- It supports the general 110 termination method to ensure the reliability of the connection. "



- Gold Pin: environmentally friendly phosphor bronze, gold-plated 50U
- Plug life: ≥750times
- Terminal Sequence: T568A/T568B
- High strength fireproof plastic
- Snap conductor wire gauge: 22AWG-26AWG
- It supports the general 110 termination method to ensure the reliability of the connection.
- With intelligent LED lights, it is convenient to find lines and manage the wiring in the equipment room. "



- Gold Pin: Environmentally friendly phosphor bronze, gold-plated 50U
- Plug life: ≥750 times
- It supports the common 110 termination method to ensure the reliability of the connection.
- Terminal Sequence: T568A/T568B
- Terminates 4-pair 22AWG-26AWG cable
- High strength fireproof plastic

>> U/UTP CAT5E ULTRA-FINE PATCH CORD



● Up to standard/

ISO/IEC 11801 ANSI/TIA-568.2-D YD/T926.3-2009

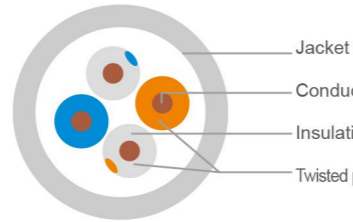
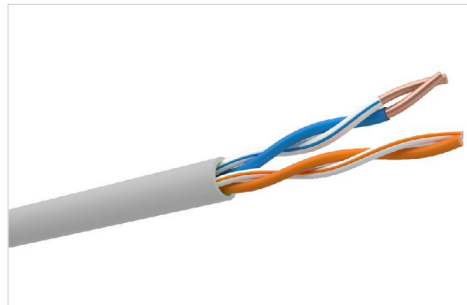
● Product features/

- Conductor material: high-purity oxygen-free copper (purity 99.9%)
- Insulation layer material: HDPE
- Outer sheath material: PVC, LSZH, TPU
- Rated temperature: -20°C~+75°C
- Maximum pulling force (installation): 110N
- Minimum bending radius (installation): 4 times the outer diameter of the cable
- The crystal head crimping reed is 50U gold-plated as a whole to ensure excellent performance
- The crystal head glue injection is divided into ordinary type and color ring type, and the color ring type is easy to distinguish and manage the wires of the same color.

>> U/UTP CAT5E PATCH CORD



>> U/UTP CAT3 TELEPHONE WIRE



● Up to standard/

ISO/IEC 11801 ANSI/TIA-568-B.2 YD/T1019-2013

● Product features/

- Made of high-quality materials
- Raw materials comply with ROHS, and harmful substances are controlled within the strictest international standards
- Support high-speed transmission of voice signals
- Cable diameter: 3.8±0.2mm
- Conductor material: high-purity oxygen-free copper (purity 99.9%)
- Insulation layer material: HDPE
- Outer Sheath Material: PVC

>> U/UTP CAT3 KEYSTONE JACK (KJ)



● Up to standard/

ISO/IEC 11801 ANSI/TIA-568-B.2 YD/T926.3-2009

● Product features/

- IDC terminal: snap on 22-24AWG conductor
- The number of times of plug and socket unplugging ≥ 750 times
- Wire termination times ≥ 250 times
- Flame retardant grade meets UL94V-0
- Rated temperature: -20 °C~+70 °C
- Using high-quality PC engineering plastics, 90-degree wire
- The 4-core contact reed is made of phosphor bronze gold-plated 50U and the IDC card wire terminal is made of phosphor bronze galvanized, which can effectively prevent surface oxidation and improve the contact performance and transmission performance of the module
- Support general 110 termination method to ensure the reliability of the connection

>> VOICE PATCH CORD



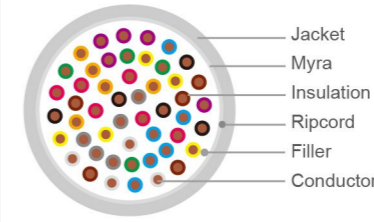
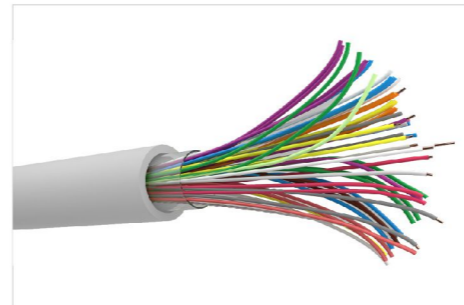
● Up to standard/

ISO/IEC 11801 ANSI/TIA-568-B.2 YD/T926.3-2009

● Product features/

- Type: 2 cores, 4 cores
- Conductor diameter: generally 0.4mm, 0.5mm
- Conductor material: high-purity oxygen-free copper (purity 99.9%)
- Insulation layer material: HDPE
- Outer Sheath Material: PVC, LSZH
- Maximum pulling force (installation): 110N
- Minimum bending radius (installation): 4 times the outer diameter of the cable
- One end provides 110 duckbill connection, the other end provides RJ45 connector
- The crystal head crimping reed is 50U gold-plated as a whole to ensure excellent performance

>> UNSHIELDED INDOOR COMMUNICATION CABLE



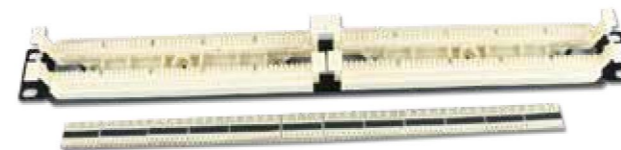
● Up to standard/

ISO/IEC 11801 ANSI/TIA-568-B.2 YD/T1019-2013

● Product features/

- Made of high-quality materials with a 30-year warranty
- Raw materials comply with ROHS, and harmful substances are controlled within the strictest international standards
- For transmission of digital and analog voice signals
- The normal stock is 25 pairs, and three can be customized according to demand
- Layer structure design, vertical color code for easy identification
- Cable structure: PE sheath + coated aluminum tape to ensure a certain waterproof performance
- Specifications: 10/20/25/30/50/100/200 pairs, maximum 600 pairs
- Conductor material: high-purity oxygen-free copper (purity 99.9%)
- Conductor diameter: generally 0.4mm or 0.5mm

>> 110 VOICE DISTRIBUTION FRAME 50/100/200 PAIRS



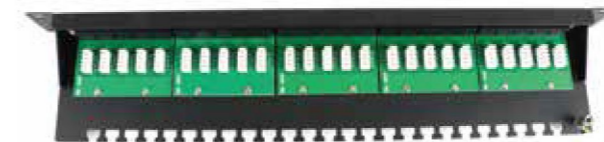
● Up to standard/

ISO/IEC 11801 ANSI/TIA-568-B.2 YD/T926.3-2009

● Product features/

- Wire gauge: 22AWG-24AWG
- Standard 19" Rack
- Fully equipped with connection block, with self-installed back plate and label strip
- There are 50 pairs, 100 pairs, and 200 pairs to choose from
- Insertion life: 1000 times
- Applicable wire gauge: 22AWG-24AWG
- Flame retardant grade meets UL94V-0
- Rated temperature: -20°C~+70°C

>> 19" 25 PORT VOICE PATCH PANEL



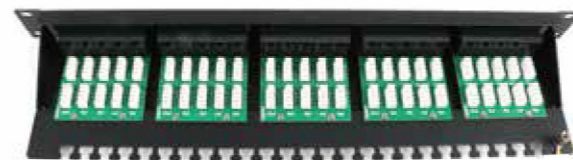
● Up to standard/

ISO/IEC 11801 ANSI/TIA-568-B.2 YD/T926.3-2009

● Product features/

- Mounting plate: cold-rolled steel plate, sprayed, black
- Flame retardant grade meets UL94V-0 pressure
- The number of connections can reach more than 250 times
- Rated temperature: -20°C~+70°C

>> 19"50 VOICE PATCH PANEL



The card wire terminal is made of phosphor bronze galvanized, which can effectively prevent surface oxidation and improve the contact performance and transmission performance of the cable; Impact-resistant and anti-aging materials required by the environment; standard 19" rack type, with a wide range of applications, easy and fast installation, maintenance, and expansion, and two specifications of 25 ports and 50 ports are available.

09

RJ45 SERIES

>> S/FTP CAT 8 PRESSURE-FREE 50U RJ45



>> S/FTP CAT 8 PULL TAB & THREE-PIECE TYPE 50U RJ45



>> F/UTP CAT6A PRESSURE-FREE 50U RJ45



>> F/UTP CAT6A/6/5 50U RJ45



>> U/UTP CAT6A 50U RJ45



>> F/UTP CAT6/5E 50U RJ45



>> U/UTP CAT5E PRESSURE-FREE RJ45



>> U/UTP CAT6/5 STEEL RJ45



10

PANEL/GROUND PLUG/TOOL SERIES

>> FACE PLATE



Slanted double panel

Slanted single panel

● Up to standard/

- Material: ABS
- Rated temperature: -20°C~+70°C
- With a dust cover to prevent dust from entering the interface
- With identification strip, it is convenient for number management and maintenance
- With a flag block, it is convenient for network segment division and purpose distinction.
- Combined structure, double-layer front and rear panel design, beautiful appearance, avoid the exposure of fixing screw holes
- Provide single-port, double-port, four-port 86*86 series products, which can be used together with the 86-type bottom box

>> FIBER OPTIC PANEL



● Up to standard/

- The dimensions of the panel conform to the national standard 86 type
- Suitable for SC simplex adapter or LC duplex adapter installation, applied to work area wiring subsystem
- Embedded face frame, easy to install
- With dustproof device to prevent dust from entering
- Equipped with identification strip, convenient for number management and maintenance
- Product material: high-quality PC (flame retardant polycarbonate) material, with certain fire resistance

>> POP-UP GROUND PLUG



● Up to standard/

- Conventional three-port design, the module can be freely disassembled and exchanged according to requirements, which is convenient for use.
- The product is made of copper alloy precision casting, and the surface is processed by a special polishing process, with high strength and exquisite and beautiful appearance.
- The pop-up type contains a magnetic damping device, and the pop-up operation is convenient and flexible.
- Dust and waterproof design
- Support the use of three types of, super five, six and 6A modules
- Material: Copper alloy precision casting
- Rated temperature: -20°C~+70°C

>> 14 SUITS NETWORK KITS



Professional Electronic Distribution Frame Tester

Network crimping tool kit combination

- Three-purpose network crimping tool, 8P+6P+4P three-purpose crimping tool
1. There are three functions of stripping, tangent and crimping
 2. The tool seat head is made of all-metal, with a long service life
 3. The handle is made of special material, which is non-slip, comfortable to use, feels very strong, and conforms to ergonomic design
 4. Save time and effort, improve crimping efficiency, and individuals can easily complete crimping
 5. The quality of the blade is good, which can ensure that the cut port is flat and free of burrs. The distance between the two metal blades is moderate, which can easily peel off the rubber of the twisted pair, but it is not easy to cut the network cable.
 6. The outer dimensions of the pressure line segment are consistent with the water product head, and it is not easy to dislocate, which can better make the connection between the twisted pair and the water product head firm.
 7. Two products are available: ordinary network tester and professional electronic patch panel tester.

>> PATCH PANEL



● Up to standard/ ANSI/TIA 568.2-D IEC 11801:2012 YD /T 926.3-2009

● Product features/

- Cold rolled steel sheet, black
- Compatible with CAT 6A, CAT 6 and CAT 5e modules
- Standard 19" installation, wide range of applications, easy and fast maintenance and expansion
- It is modular, with its own silk-screen port numbers and a cable management bracket on the back, which is convenient for cable management at the rear of the cabinet when it is terminated.
- Rated temperature: -20 °C ~ +70 °C

>> PATCH PANEL



● Up to standard/ ANSI/TIA 568.2-D IEC 11801:2012 YD /T 926.3-2009

● Product features/

- Cold rolled steel sheet, black
- Compatible with CAT 6A, CAT 6 and CAT 5e shielded modules
- Standard 19" installation, wide range of applications, easy and fast maintenance and expansion
- Metal shell, with reliable ground terminal and good shielding performance.
- Rated temperature: -20 °C ~ +70 °C

>> CAT6 1U/CAT6A 1U 24 PORTS EXPRESS UNSHIELDED PATCH PANEL



● Up to standard/ ANSI/TIA 568.2-D IEC 11801:2012 YD /T 926.3-2009

● Product features/

- Cold rolled steel sheet, black
- Applications that support CAT6A、CAT6 class systems
- Standard 19" installation, wide range of applications, easy and fast maintenance and expansion
- The product adopts the design of easy disassembly and recyclability, which is in line with the concept of environmental protection
- High performance with guaranteed link margin
- Easy to install and save packaging space
- Oversized label strip design for easy construction marking
- Gold needle plated 50U, contacts are not oxidized
- Rated temperature: -20 °C ~ +70 °C

>> PATCH PANEL



● Up to standard/ ANSI/TIA 568.2-D IEC 11801:2012 YD /T 926.3-2009

● Product features/

- Cold rolled steel sheet, black
- Support the application of CAT6A type shielding system
- Standard 19" installation, wide range of applications, easy and fast maintenance and expansion
- All metal shell, good shielding performance, high-speed and stable data transmission.
- Gold needle plated 50U, contacts are not oxidized
- Rated temperature: -20 °C ~ +70 °C

>> PATCH PANEL



● Product features/

- This product is a shielded, unshielded public design, 1.5mm thick sheet metal
- 1U, 19", 24-port standard rack design
- The rear bracket is folded to effectively reduce transportation and packaging costs. More effectively avoid deformation during transportation
- When used in shielding system, the back plate and bracket are nickel-plated structure, which can effectively ensure good grounding
- When used in unshielded systems, the back plate and bracket are of fine-grained paint structure
- The double hook design of the rear cable rack makes the assembly more sturdy and easy to install
- The design reduces installation and operation costs
- The rear bracket can be optionally assembled with 6 PORT card sockets
- Rated temperature: -20 °C ~ +70 °C

>> CABLE MANGEMENT



● Up to standard/ ANSI/TIA 568.2-D IEC 11801:2012 YD /T 926.3-2009

● Product features/

- The cable organizer is made of 1.2mm iron plate as a whole, with strong mechanical properties
- Comb-type trunking structure keeps jumpers neat and unwound, making the wiring system neat and beautiful
- The snap-on cover is convenient for disassembly and assembly during wiring
- The surface is black and frosted, and the appearance is beautiful
- Rated temperature: -40 ~ +60 °C
- 12 gears with a depth of 70mm, and a higher depth to increase the cable management space

03

PROJECT CASE DISPLAY



Beijing Institute of Zoology <



National Museum data Center <



People's Daily Building <



Nanjing Medical University <



> Beijing Airport aviation fuel project



The Chinese University of Hong Kong Shenzhen Campus <



Zhejiang University <



Gymnasium <



School Sports Venues <